



**ATS** HomeKraft

Aspirational Homes

# ATS HomeKraft

*Apart of ATS Group,  
With HDFC Capital as Equity Partner.*

*Garnered significant impression in the real estate sector,  
With a new concept in the realm of aspirational housing.*



Legacy of Over  
**21** Years

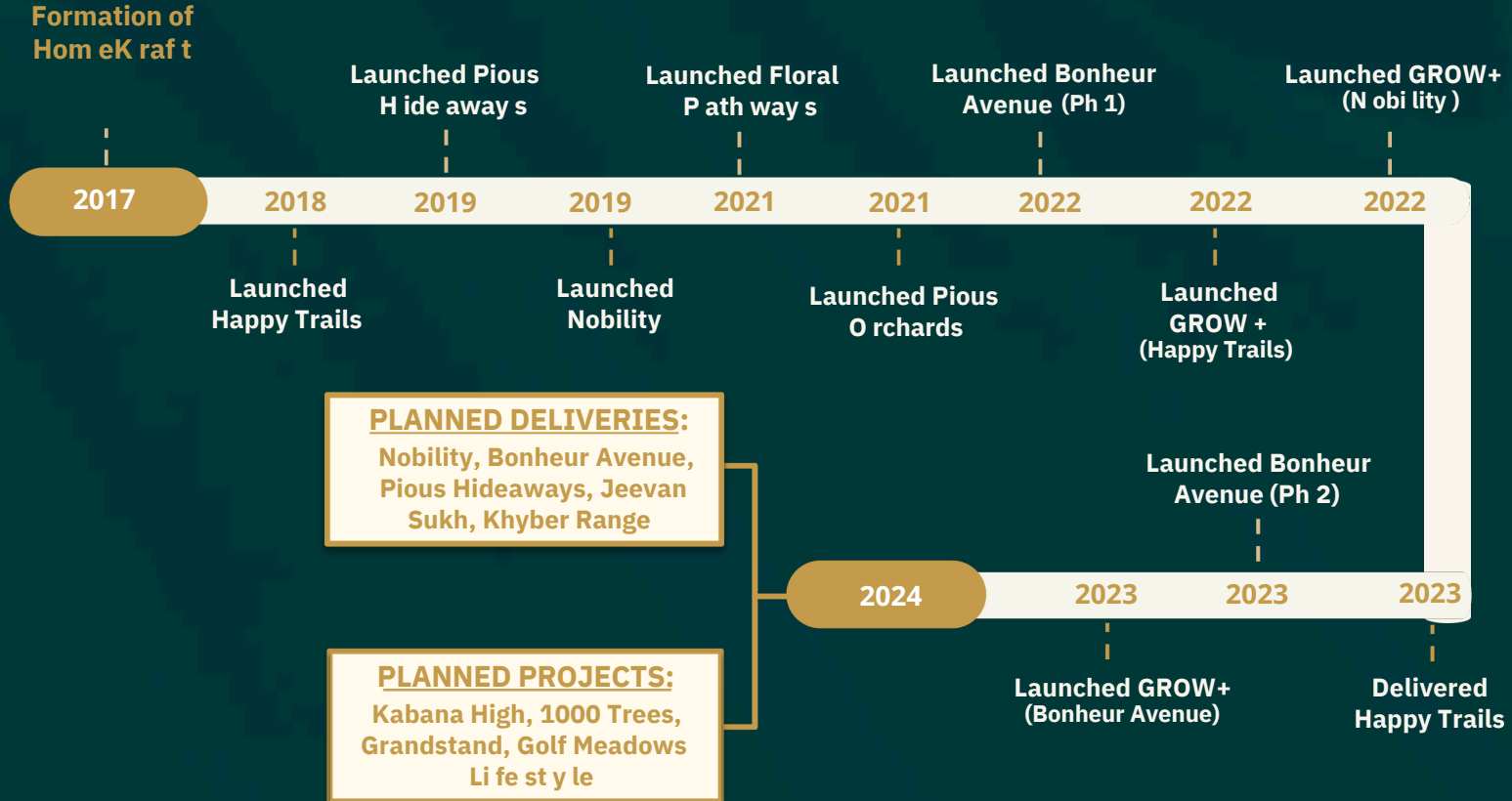


Designed Over  
**50** M Sq.Ft.



In Progress Over  
**40** M Sq.Ft.

# TIMELINE





# RESIDENTIAL PROJECTS

## Happy Trails

Sector 10,  
Greater Noida  
West

**DELIVERED  
BEFORE TIME**

## Pious Hideaways

Sector 150,  
Greater Noida

**POSSESSION  
UNDERWAY**

## Nobility

Sector 4,  
Greater Noida  
West

**DELIVERED  
BEFORE TIME**

## Bonheur Avenue

Sector 35,  
Gurugram

**CC RECEIVED;  
POSSESSION  
UNDERWAY**

## Floral Pathways

NH 24,  
Ghaziabad

**UNDER  
CONSTRUCTION**

## Pious Orchards

Sector 150,  
Greater Noida

**UNDER  
CONSTRUCTION**

## Bonheur Avenue (Ph 2)

Sector 35,  
Gurugram

**UNDER  
CONSTRUCTION**



# COMMERCIAL PROJECTS

## Khyber Range

NH 24,  
Ghaziabad

**CC APPLIED**

## Grow+ Happy Trails

Sector 10,  
Greater Noida  
West

**DELIVERED  
BEFORE TIME**

## Grow+ Nobility

Sector 4,  
Greater Noida  
West

**DELIVERED  
BEFORE TIME**

## Grow+ Bonheur Avenue

Sector 35,  
Gurugram

**UNDER  
CONSTRUCTION**



# UPCOMING PROJECT

---



CODE NAME

1000  
TREES





# INTRODUCTION



S. No.	Specifications	Details
1	Total Land Parcel	13.1 Acers Approx
2	No of Towers	11
3	Tower Height	G+32 & G+34 Approx
4	No of Units	750 Approx
5	Typology	3BHK + Study, 4BHK + Servant
6	Area	1800 To 1900 Sq. Ft., 2700 to 2900 Sq. Ft.





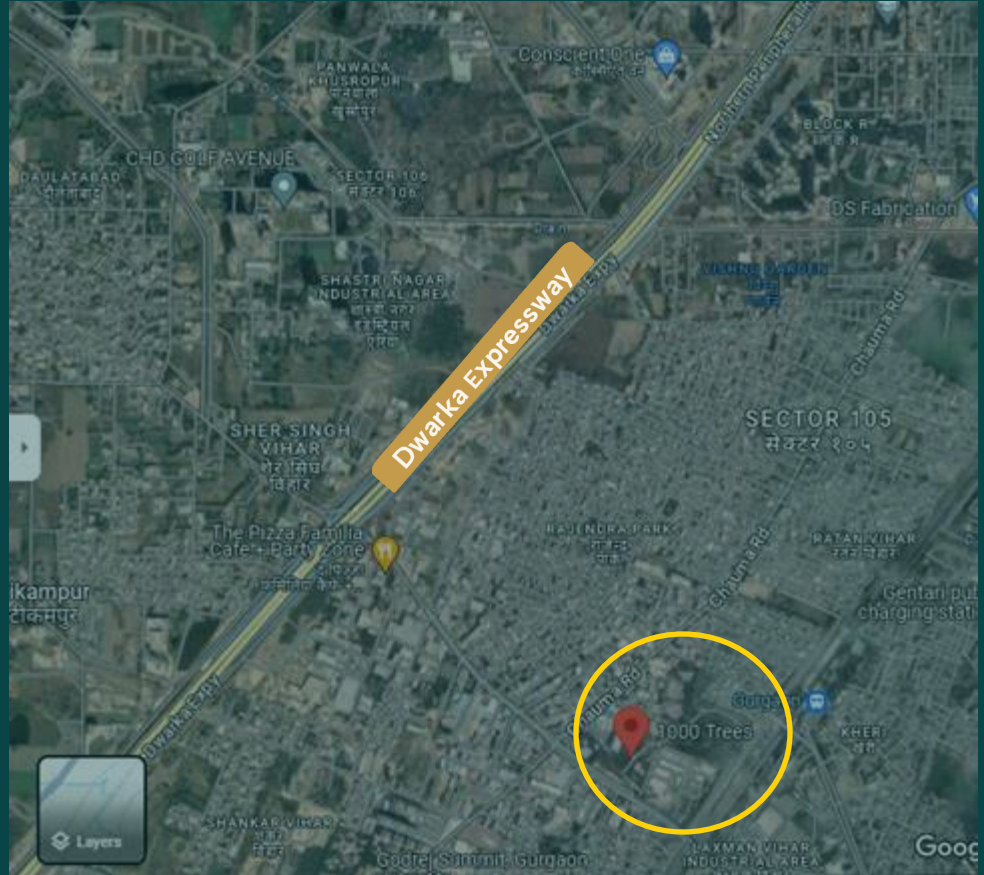
# PHASE WISE DEVELOPMENT

Details	Towers	Units
Phase 1	1 -4 & 9,10,11	460 (approx.)



# LOCATION

- 1.25 Km from Dwarka Expressway,
- 10 Min drive to Gurgaon Railway Station,
- 10 min drive to leisure point (Neo Centre, Conscient One, Ocus Medley,
- 15 min drive to Manipal Hospital,
- 15 min drive Yashobhoomi Convention Centre,
- 25 Min drive to T3 IGI,





# WHAT ARE WE HERE FOR??





# PRE LAUNCH PRICE

₹

13,000\*  
Per Sq. Ft.



# EARLY BIRD OFFER

*Early Bird Price of*

₹

11,000\*

Per Sq. Ft.

₹

~~13,000~~  
Per Sq. Ft.





# THE HAPPY NEWS

*Just Pay EOI Amount of*

₹

5 Lac

Bankable Cheque in favour of -1000 Trees Housing Pvt.Ltd.\_\_\_\_\_

---

# THANK YOU



[facebook.com/GrowmaxWealth](https://facebook.com/GrowmaxWealth)



[instagram.com/growmaxwealth/](https://instagram.com/growmaxwealth/)



[instagram.com/growmaxwealth/](https://instagram.com/growmaxwealth/)



[linkedin.com/company/growmaxwealth](https://linkedin.com/company/growmaxwealth)



[youtube.com/account-GrowmaxWealth](https://youtube.com/account-GrowmaxWealth)



[info@growmaxwealth.com](mailto:info@growmaxwealth.com)



[growmaxwealth.com](https://growmaxwealth.com)